



Vertical Laminar Air Flow Cabinet

LAF

Application: Plant tissue culture, Media plate preparation, Electronics inspection, Medical device assembly, General Laboratory Purpose.

General features:

- o Ergonomic Control Panel Location, centered and angled down for an easy reach & viewing.
- o Brushed stainless steel work surface is for easy cleaning
- o The non-direct light source design can effectively relieve the operator's visual fatigue under the condition of ensuring the illumination
- o Intuitive and easy-to-use microprocessor controller with LCD display, graphical and digital display of the operating status of each function, such as filter life, UV life etc.



Note: Pictures just for Illustration. It may change any prior notice without changes technical parameters

Safety Features

- o Front sliding sash interlock with fan and UV lamp
- o UV sterilization with UV lamp timing function
- o Front sash and side windows are made of UV-resistant tempered glass
- o The host and sockets have independent capacitors to prevent current overload

Convenience Features

- o Memory function in case of power-failure.
- o HEPA filter and UV life indicators facilitate a timely replacement plan
- o Two side glass windows installed for easy experiment observation
- o Easy-to-change pre-filter installed could extend the HEPA filter's lifetime
- o Equipped with temperature sensor to show the real temperature during operation
- o Waterproof socket provide convenience for small instruments to be used in the operating area

Registered office

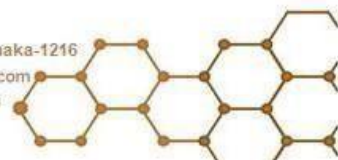
Quality Services Bangladesh

45 Gulshan C/A, Navana Tower (5th floor)
Gulshan Avenue, Gulshan-1, Dhaka-1212

Plot-568, Kamal Sarani, Monipur, Mirpur-2, Dhaka-1216

info@qs-bd.com, sales@qs-bd.com

www.qs-bd.com



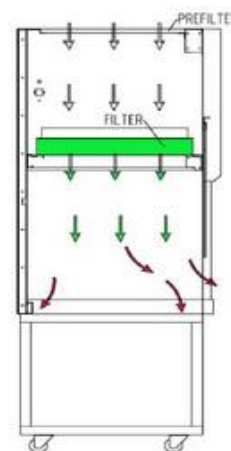
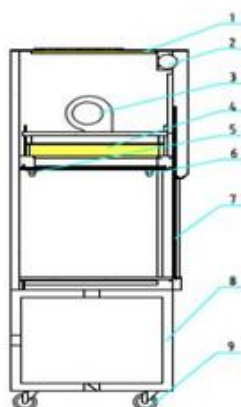
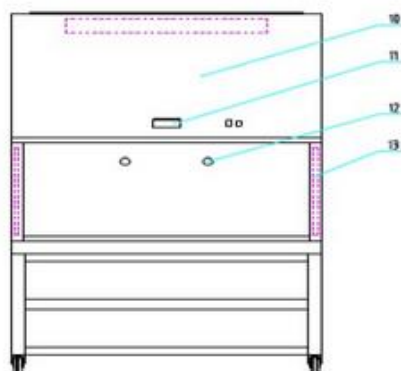


Vertical Laminar Air Flow Cabinet

LAF

Specifications:

Model	QSLAF-V8	QSLAF-V10
External Dimensions (W*D*H)(mm)	1219x863x1981 (48x34x78 inch)	1625x805x1950(64x32x77inch)
Internal Dimensions (W*D*H)(mm)	1067x762x813 (42x30x32 inch)	1525x490x574 (60x19x22 inch)
LAF Type	Vertical	Vertical
Control System	Microprocessor controller with LCD display, graphical and digital display of the operating status of each function including show remaining time, sterilizing time, and cumulative running time of the fan; Display will show service function of parameters, Short Circuit protection.	
Work Surface Height	720-750 mm	750mm
Airflow Velocity	Adjustable, 0.25~0.8 m/s	Adjustable, 0.25~0.8 m/s
HEPA Filter Efficiency	> 99.995% at particle size at 0.3 μ m	
HEPA Dimensions (W*D*H)(mm)	930*500*70 (Approx)	930*500*70 (Approx)
Lighting Lamp/ Fluorescence	LED type, Intensity \geq 900Lx and 6.5W*1	
UV Lamp	20W*1	30W*1
Power Consumption	165W, the power consumption does not include external device connected via power socket	
Cabinet Construction	Main Body: Electro-galvanized steel with antimicrobial powder coating Work Zone: Stainless steel, grade 304 Manual Sliding Sash: 5 mm UV resistant thick polycarbonate fiber glass with counter-balance system and ergonomic handle Side Windows: 5 mm UV resistant thick polycarbonate fiber glass	
Electricity	AC220V \pm 10%, 50/60Hz, 1P	
Sound Emission	\leq 62dB(A)	
Accessories	Waterproof multi-socket; Gas tap; Water tap; Casters with brakes; Hook and hook bar, Wind speed sensor	
Voltage protection	Inbuilt Over and Under Voltage protection available (120V AC to 280V AC	
Shipping Dimensions*D*H) (mm)	1190*1010*1430	1470*1020*1430
Weight	220 kg (approx.)	260 kg(approx.)



Registered office

Quality Services Bangladesh

45 Gulshan C/A, Navana Tower (5th floor)
Gulshan Avenue, Gulshan-1, Dhaka-1212

Plot-568, Kamal Sarani, Monipur, Mirpur-2, Dhaka-1216

info@qs-bd.com, sales@qs-bd.com

www.qs-bd.com

